

WAVE Wall Sconce
3-5020-xx

oxygen

FIXTURE TYPE _____

LOCATION _____

PROJECT _____

DATE _____



-24 Satin Nickel



-15 Black



-40 Aged Brass

LIGHT SOURCE 1 x 9W LED, 3000K, CRI 90

LUMINAIRE POWER 11.3W at 120V

RATED LIFE 60000 hr RL

LUMEN OUTPUT Delivered: 626 lm (LM-79)

INPUT VOLTAGE 120V, 60Hz

DRIVER OUTPUT 350mA, 15W max

DIMMING TRIAC Dimming

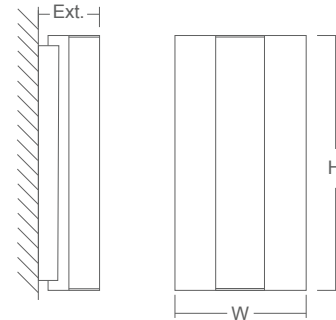
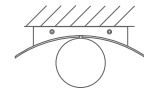
CONSTRUCTION Plated Steel and Acrylic

DIFFUSER Matte White Acrylic

FINISHES Black (-15), Satin Nickel (-24), Aged Brass (-40)

MOUNTING 4" Octagonal J-Box*
 4"x4" Square J-Box* with single device mud ring
 *Deep J-Box (Required to house driver)

STANDARDS ETL Dry/Damp listed, ADA Compliant, Conforms to UL STD 1598,
 Certified CAN/CSA, STD C22.2 No 250.0.



DIMENSIONS

W: 6.25"

H: 12.125"

Ext: 3.00"

M.C: 6.063" From Top of Fixture

Order example for standard fixture:

3-5020-xx (x-Voltage - xxx-Sequence # - xx-Finish)

